



PSUmoni2140

Software Installation Guide

V1.0.7

August 27, 2006

1.0 Introduction

Using the PSUmoni2140 application on a PC requires two steps:

- 1) Install the PSUmoni2140 application software on a PC.
- 2) Install the USB drivers to communicate with the P2140 PCB.

These steps are described in the next two sections.

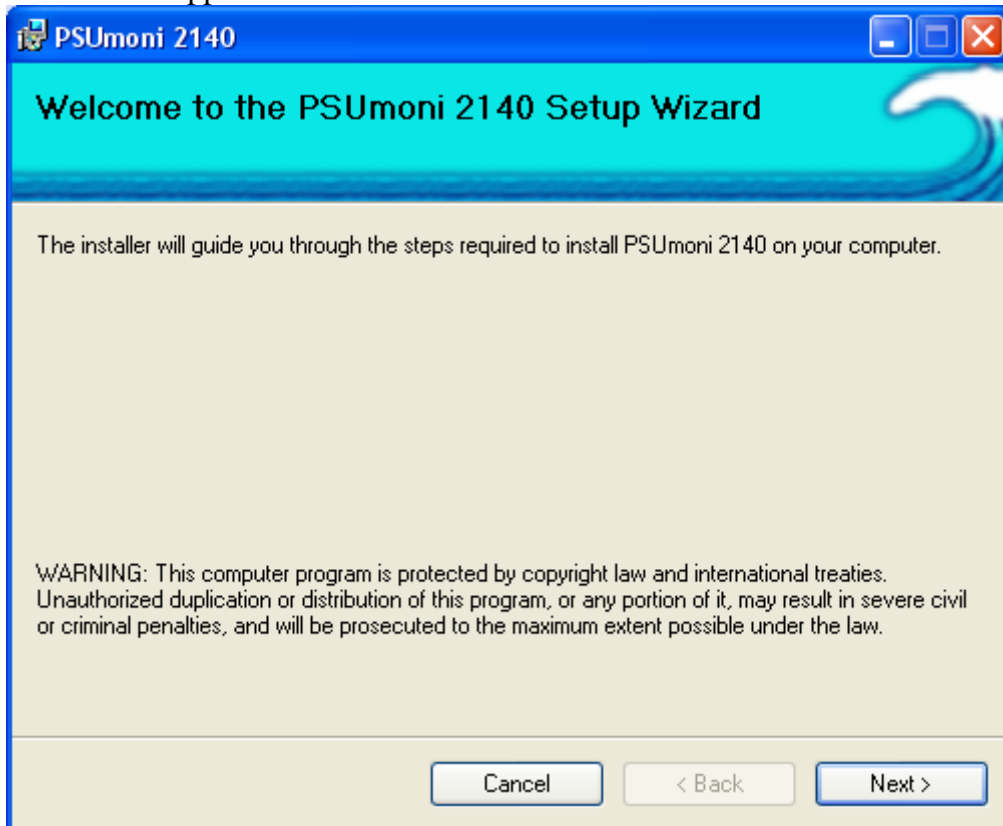
1.1 Installing PSUmoni Software on a PC

NOTE

Installation of the PSUmoni application requires that Microsoft .NET Framework 2.0 be installed on the PC prior to installing the PSUmoni application. If .NET 2.0 is not already installed on your PC, you can get a free download from Microsoft (<http://www.microsoft.com/downloads/details.aspx?FamilyID=0856EACB-4362-4B0D-8EDD-AAB15C5E04F5&displaylang=en>). Once .NET 2.0 is installed, proceed with the installation of PSUmoni as described below.

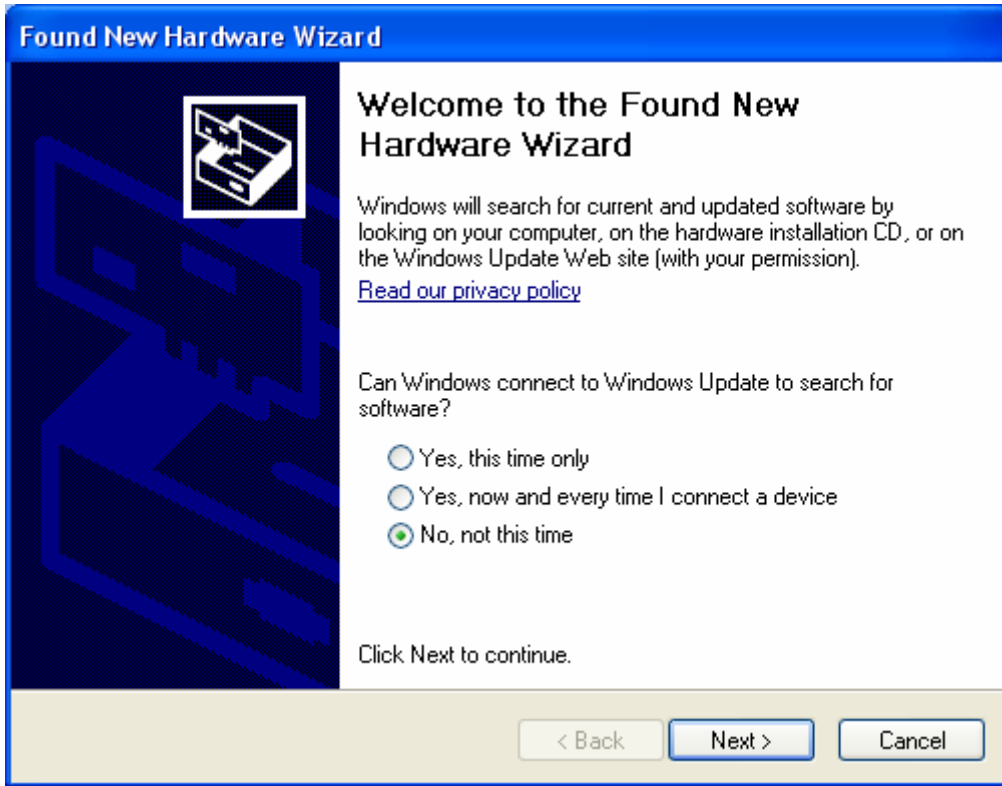
Unzip the PSUmoni installation file *PSUmoni2140V1_0_7Setup.zip* to a location that you can remember. You will need to access the USB driver files during the next installation step (USB driver installation).

Run the installation program *PSUmoni2140.msi* and follow the instructions on the screen to install the application.

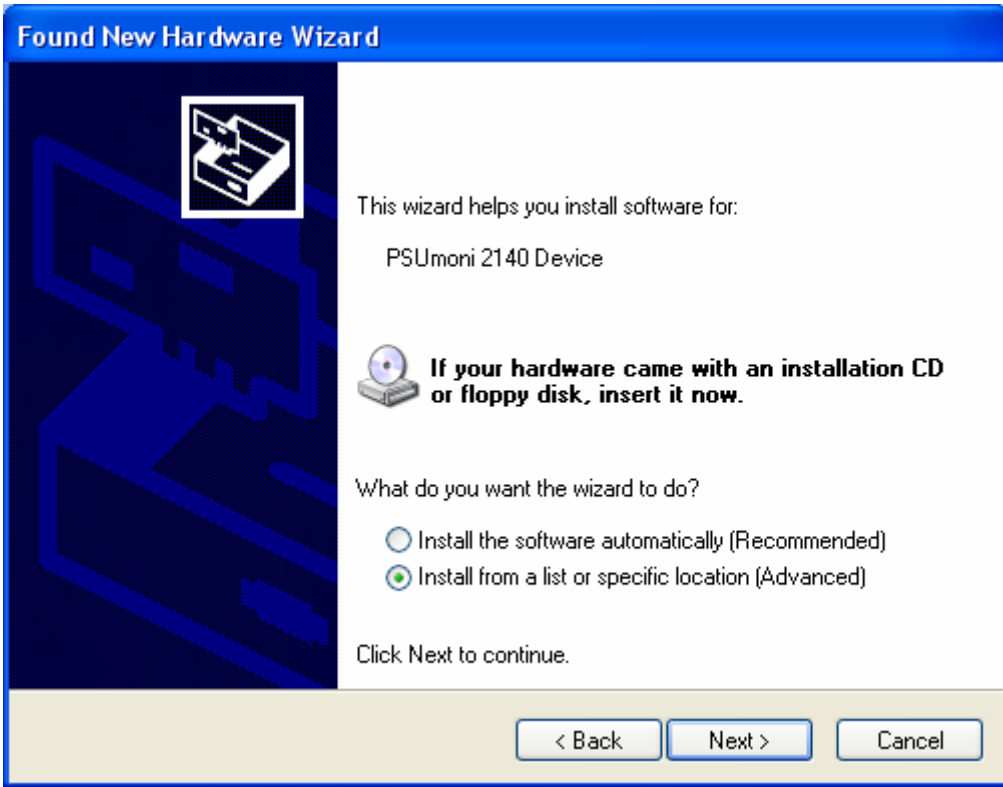


1.2 Installing the USB drivers for the P2140 PCB.

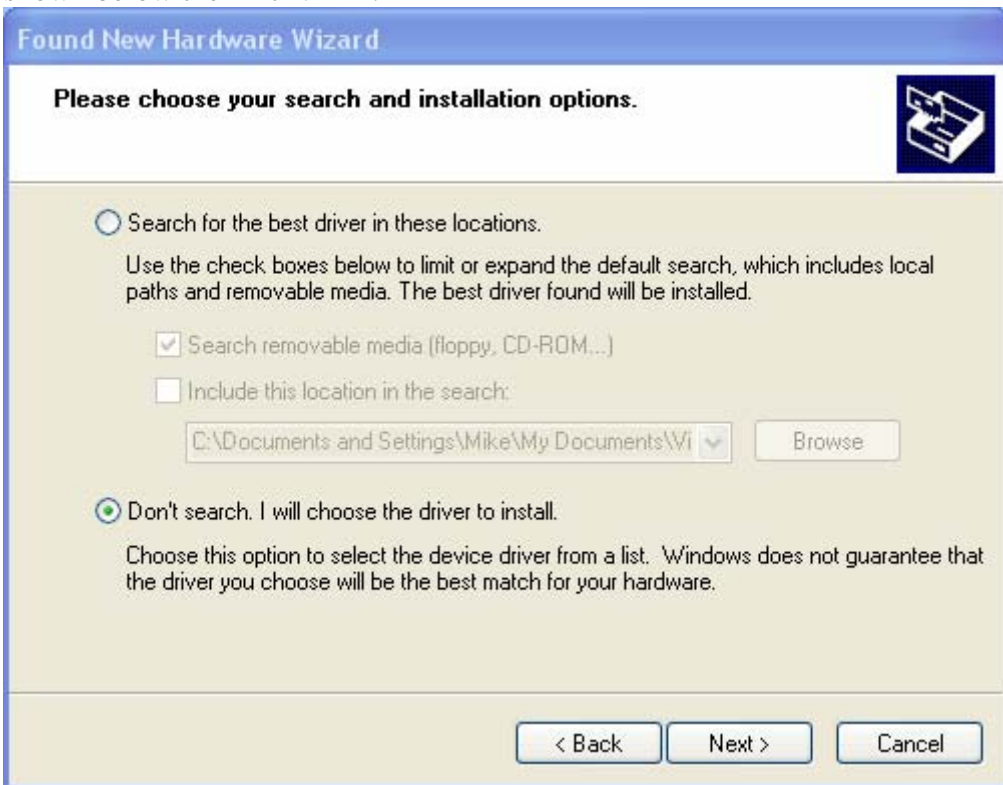
After you successfully install the PSUmoni2140 application, connect a USB cable from your PC to the P2140 PCB. This will cause the PC to recognize a new USB device and you will be prompted to install the USB device drivers for the P2140.



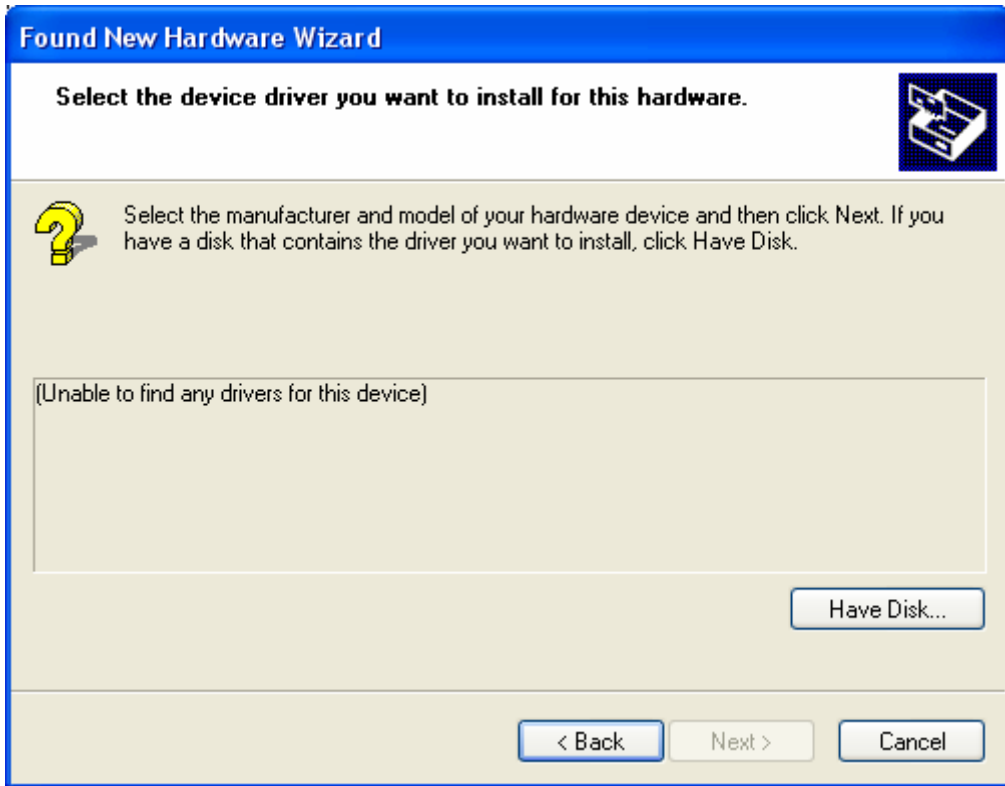
Click “No, not this time” then click the NEXT button. You will then see the following window.



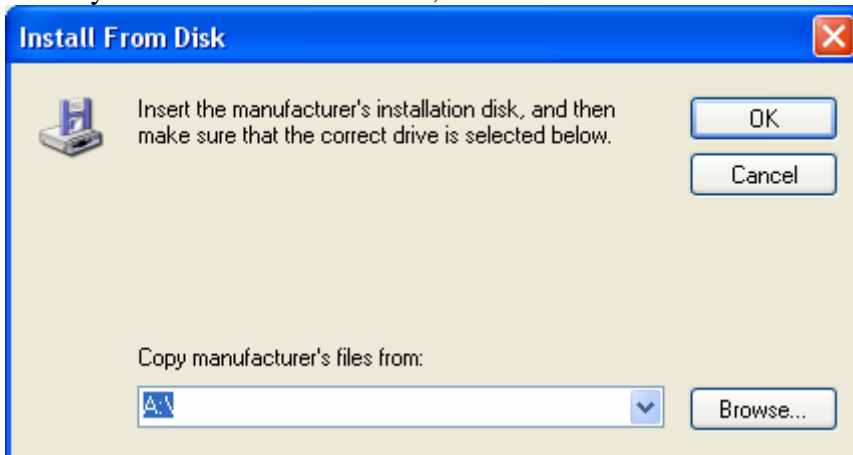
Click the “Install from a list or specific location” the hit NEXT. You will then be prompted to specify where to search for the driver. Click the “Don’t search” button shown below then hit NEXT.



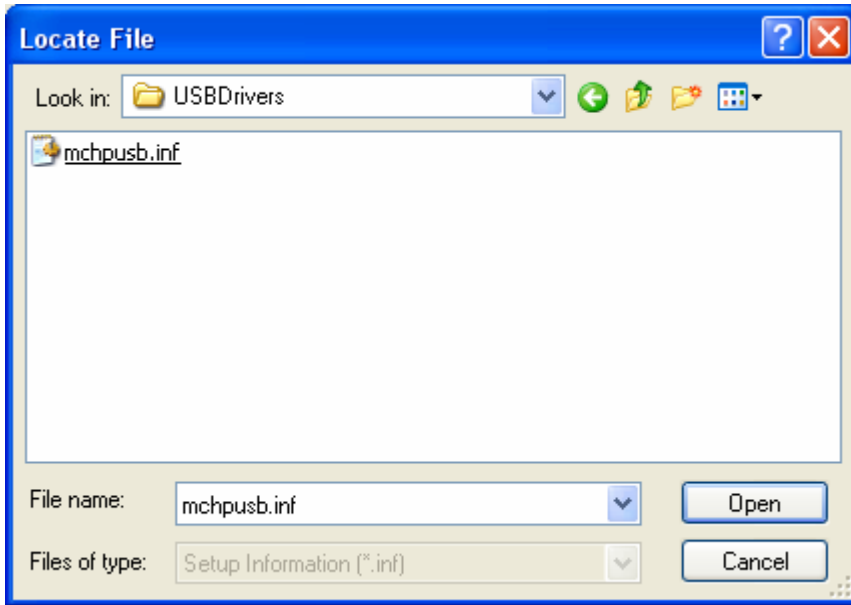
You will then see the following window. Click the button “Have Disk”.



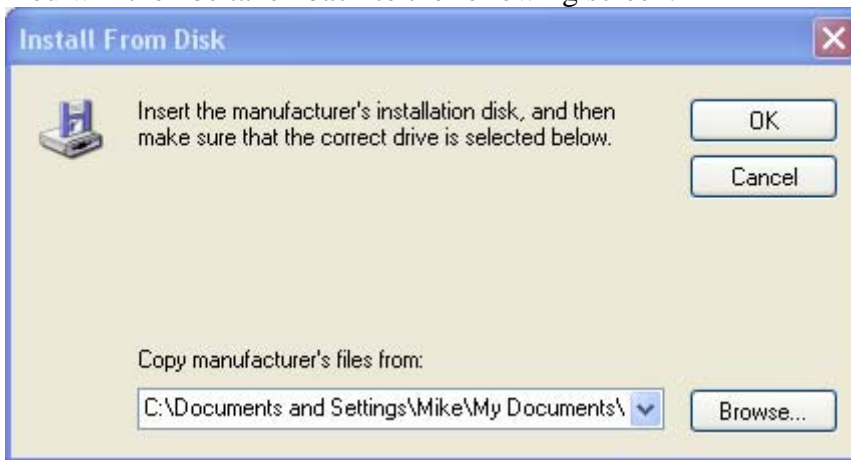
When you see the window below, hit the “Browse” button.



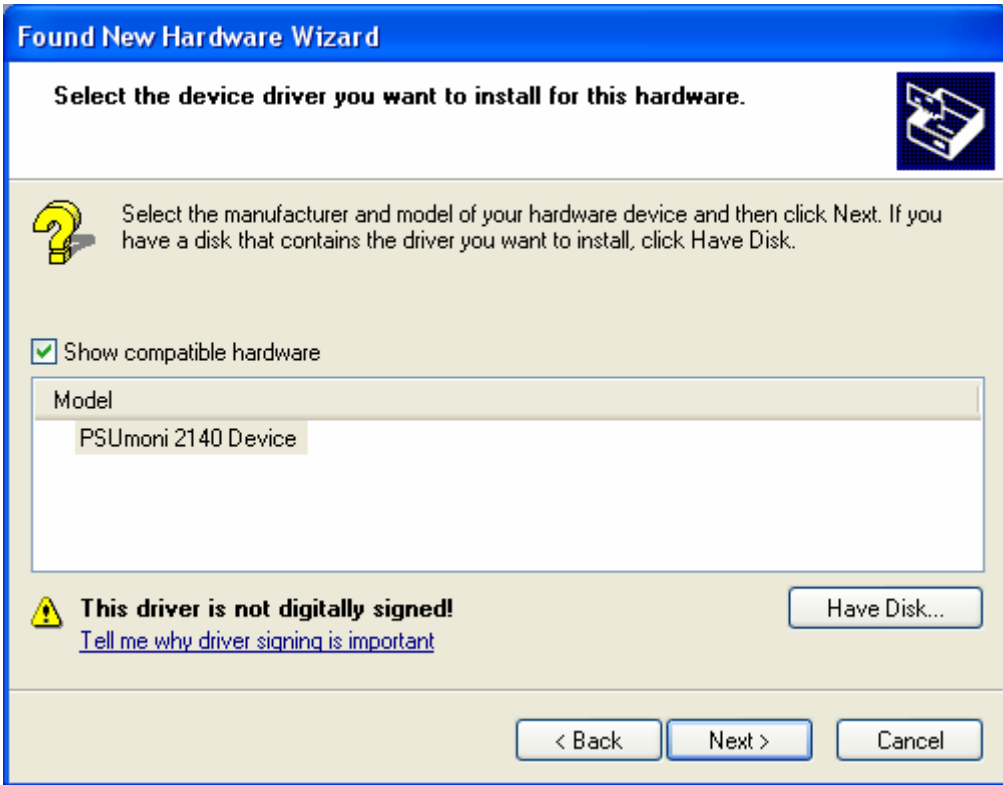
Navigate to the location where your PSUmoniSetup files were unzipped. In this file you will see a sub-folder called USBDrivers. Navigate to this sub-folder where you will see the file called mchpubs.inf. Click on this file.



You will then be taken back to the following screen:



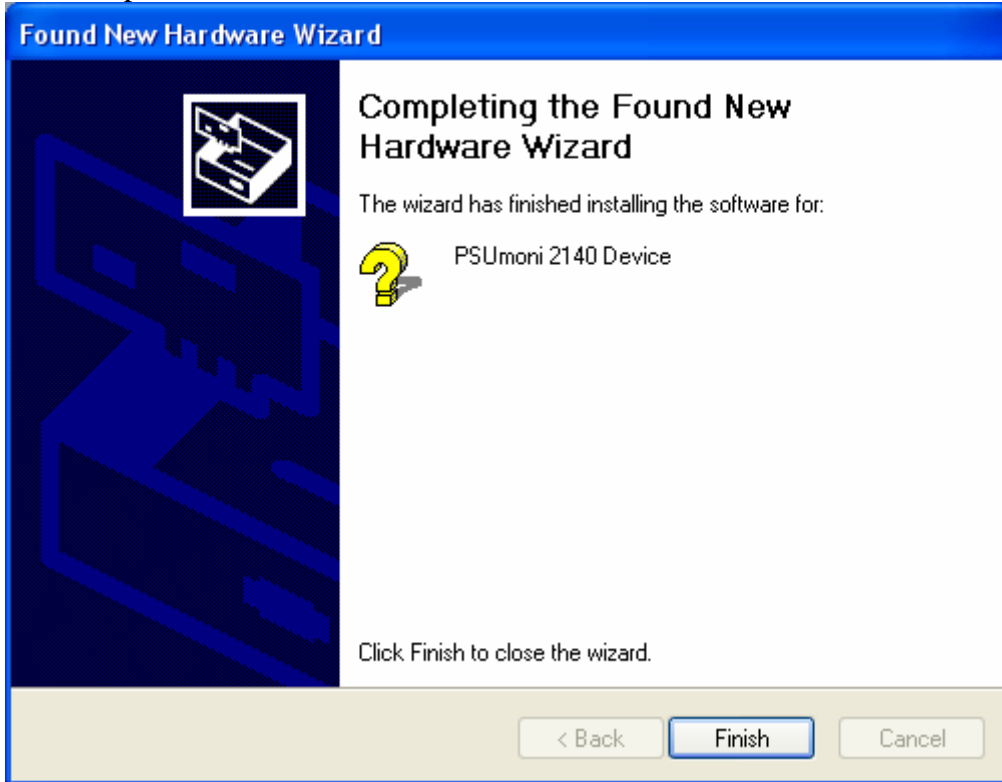
Now click "OK" and you will be brought back to the following window:



Click the “Next” button and Microsoft will warn you that we did not pay their ransom. Tell them you don’t care by hitting the “Continue Anyway” button.



This will bring you to the final screen. Hit the “Finish” button. The driver installation is now complete.



You will now be able to start the PSUmoni program and communicate via the USB cable with the P2140 PCB.